

Untitled

Legend
Canton Safe Routes

Option "A" Material Laydown:
Pipe, Structures, Misc. Items for
Drainage Installation.

Option "B"

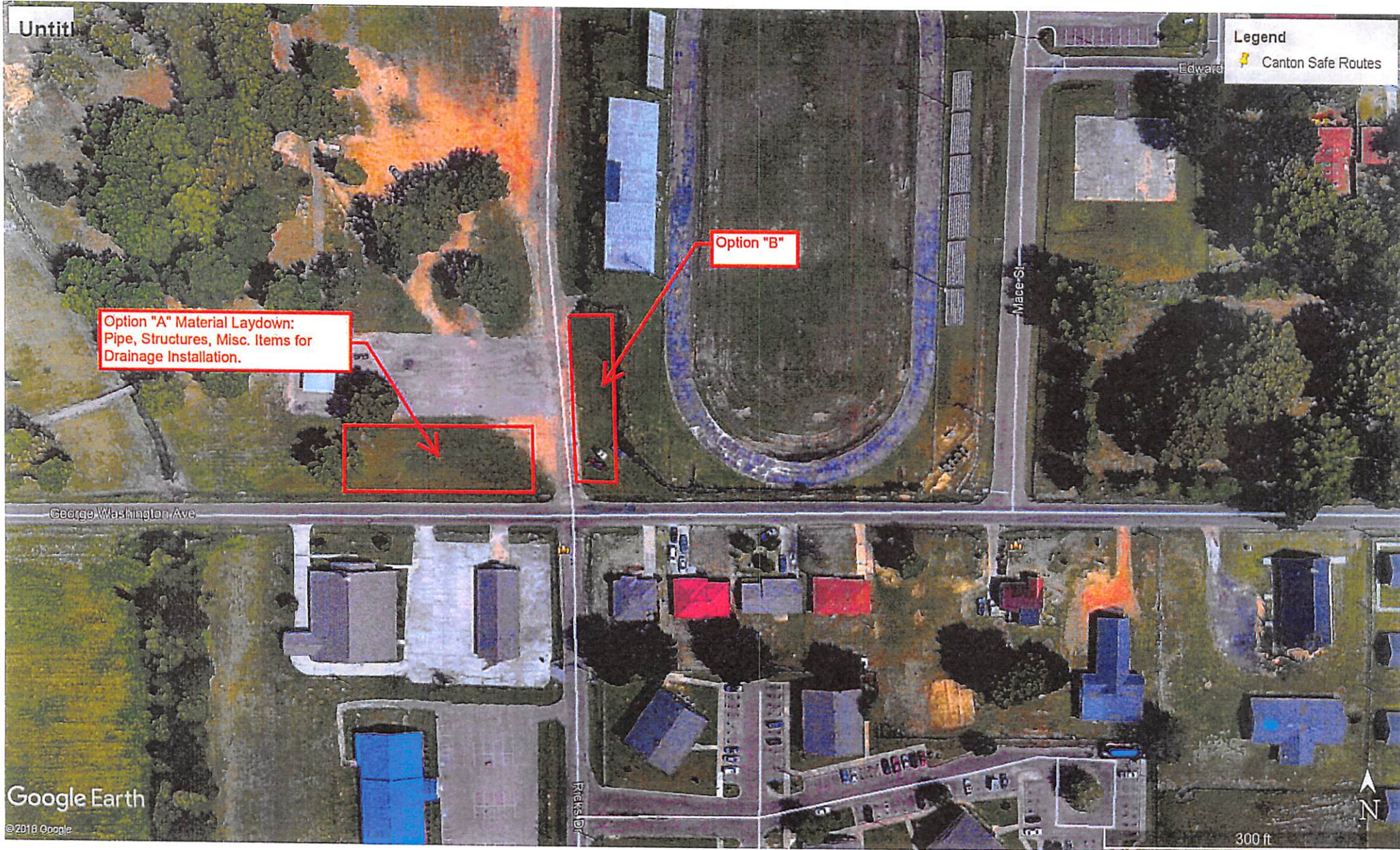
George Washington Ave

Mace St

Google Earth

© 2018 Google

300 ft



Danny Lee

From: Chris Buckalew <cbuckalew@hemphillconstruction.com>
Sent: Wednesday, August 28, 2019 3:15 PM
To: Danny Lee
Cc: Charles Smith; Andrew Heard; Chris Buckalew
Subject: Canton Safe Routes: Ricks Dr & Washington Laydown Area Request
Attachments: Material Laydown.pdf

Mr. Lee,

As discussed Hemphill Construction Company will be starting the Canton Safe Routes to School Sidewalk Project for the City of Canton. The project begins at Ricks Dr and goes east to MLK. We are requesting a laydown area for the following material and equipment that will be required to complete this project. The project is schedule to begin in September and be completed by the end of January. The area disturbed will be graded and grassed after completion of the project.

Material & Equipment:

Trackhoes, Loader and other small misc. equipment
RCP Pipe and Precast Concrete Drainage Structures
Rebar, form board and misc. sidewalk material
Stone & Fill material as required

If you have any questions please give me a call.

Thanks,

Chris Buckalew
Project Manager



Hemphill Construction Company, Inc.
P.O. Drawer 879
1858 Highway 49 South
Florence, MS 39073-0879
Office: 601-326-8118
Fax: 601-932-2550
Mobile: 601-750-3339
Email: cbuckalew@hemphillconstruction.com
Web: www.hemphillconstruction.com

This electronic mail message and any files transmitted with it may contain confidential and/or privileged information and is the property of HEMPHILL CONSTRUCTION CO. INC. If you are not the intended recipient, you are hereby notified that any use of the contents of this message or any unauthorized copying, disclosure, or distribution of the material in this message is strictly prohibited. If you received this communication in error, please immediately return this message to the sender and delete the original message and any copy of it in your possession.
Message ID: NUNRT1Q1